



# GAT MONTHLY MEMBERSHIP PROGRESS REPORT

Results as of: 2/28/2023

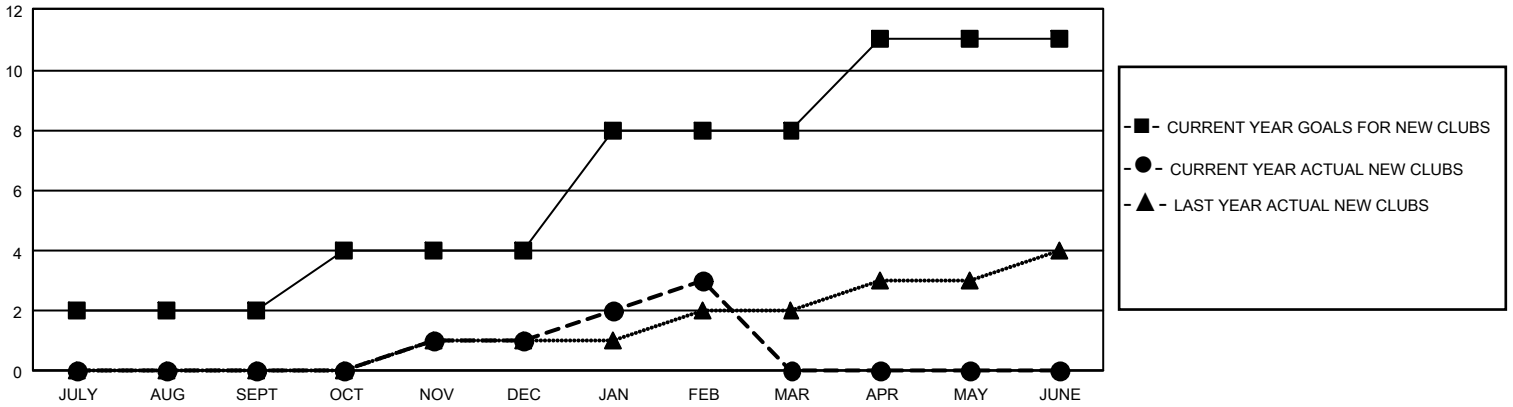
## GMT Constitutional Area 5 - J, Group J

REPORT DOES NOT INCLUDE CLUBS IN UNDISTRICTED AREAS.

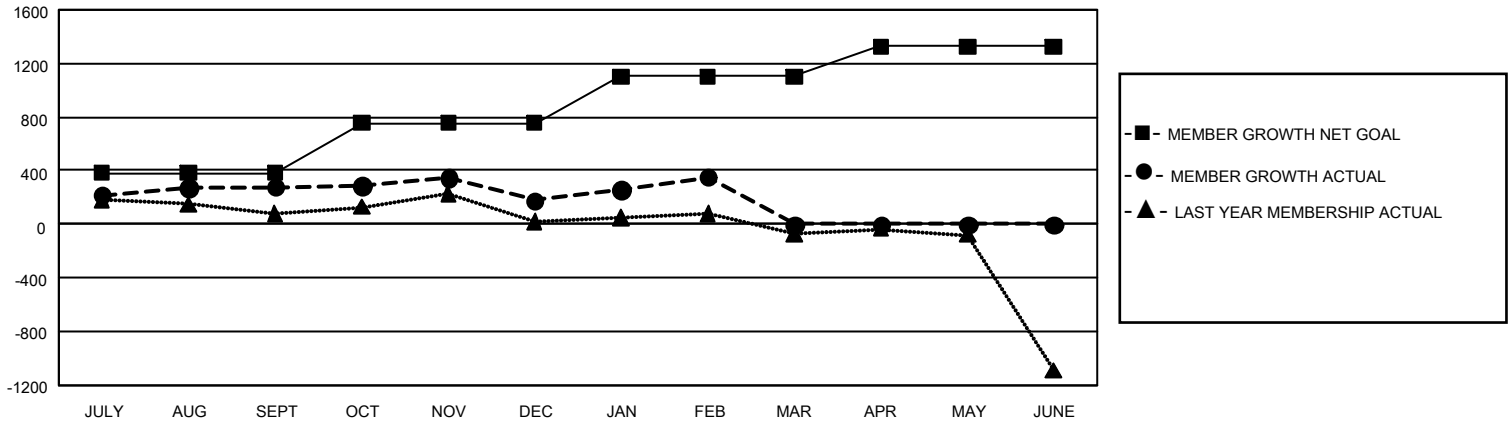
Clubs			
RESULTS FOR 2022-2023			
QUARTER	NEW CLUB GOAL	NEW CLUBS	DROPPED CLUBS
JULY/AUG/SEPT	6	0	1
OCT/NOV/DEC	6	1	0
JAN/FEB/MAR	12	2	0
APR/MAY/JUNE	9	0	0

Members			
RESULTS FOR 2022-2023			
QUARTER	MEMBER GROWTH NET GOAL	MEMBER GROWTH ACTUAL	DROPPED MEMBERS ACTUAL (including transfers)
JULY/AUG/SEPT	381	800	471
OCT/NOV/DEC	375	360	453
JAN/FEB/MAR	345	430	250
APR/MAY/JUNE	225	0	0

GOALS AND ACTUAL NEW CLUBS CUMULATIVE



GOALS AND ACTUAL MEMBERS CUMULATIVE



<b>DROPPED CLUBS: 1</b>	502 CLUBS OF 757 ADDED 1 OR MORE NEW MEMBERS	<b><u>GENDER DISTRIBUTION</u></b>	
		MALE 21,303 (78.67%) FEMALE 5,768 (21.30%) NON BINARY 0 (0.00%) PREFER NOT TO ANSWER 7 (0.03%)	
<b><u>DROPPED MEMBERS</u></b>		<a href="#">CLICK HERE FOR CUMULATIVE MEMBERSHIP DATA</a>	TOTAL FAMILY UNIT MEMBERS 7,131
DECEASED 147 CLUB CANCELLED 0 OTHER 1,027 <b>TOTAL 1,174</b>			FAMILY MEMBERS PAYING HALF DUES 3,900